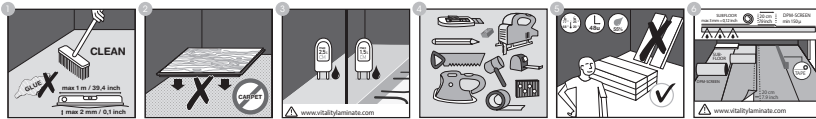


Installation instructions

Preparation



Drying time screed

The screed must have fully dried out before a Balterio laminate floor can be laid. The drying time depends on the thickness of the screed.

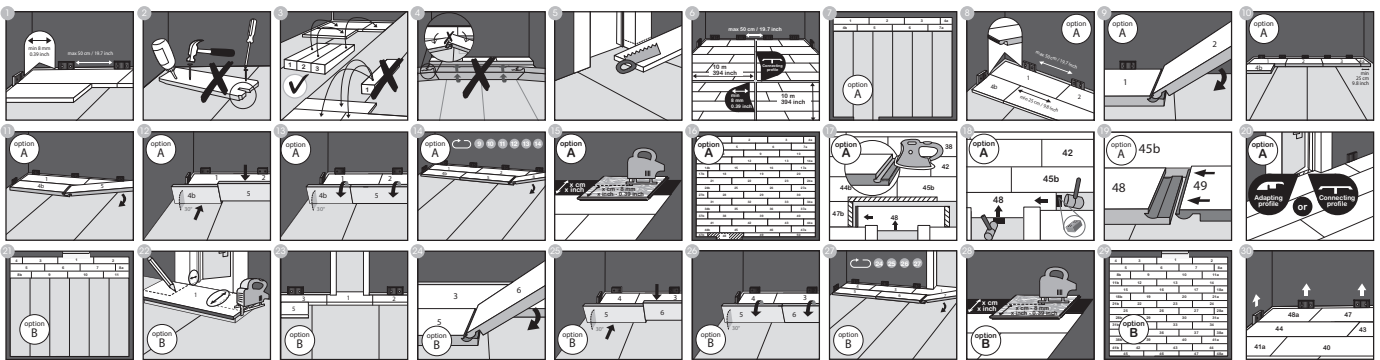
As a general rule for the drying time we can say:

- 1 week per cm to a thickness of 4 cm
- 2 weeks per cm for the part thicker than 4 cm

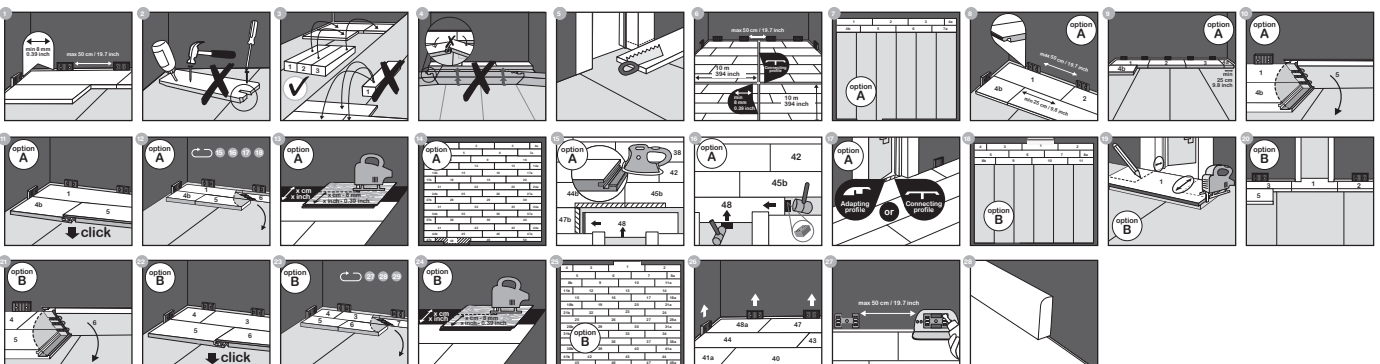
Example: for screed 6 cm thick the total drying time amounts to: (4 cm x 1 week) + (2 cm x 2 weeks) = 8 weeks.

To be fully sure that the screed has completely dried out it is recommended to measure the humidity of the screed.

Installation of the laminate floor with Clickx®



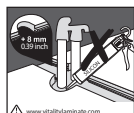
Installation of the laminate floor with PressXpress®



Maintenance



Specials - heating



Underfloor heating & floor cooling

Read all information on www.vitalitylaminates.com